

DOCKET NO. 7

YEAR	NUMBER	ACTION
------	--------	--------

81-3-ROAD

LAWRENCE TOWNSHIP OF ROUTE T-105

VERSUS

81-3-Road

RESOLUTION FOR TAKING OVER AND EXTENDING MEADOW ROAD FROM ITS INTERSECTION WITH TOWNSHIP T-105 AND A POINT APPROXIMATELY 2,050 FEET FROM FORMER TOWNSHIP ROUTE T-823 (NOW LEGISLATIVE ROUTE 17145); THENCE EXTENDING AND TRAVERSING THROUGH THE LONGMEADOW SUBDIVISION A DISTANCE OF 2,200 FEET TO A POINT ALSO ON MEADOW ROAD AT THE TERMINATION OF A PREVIOUSLY ACCEPTED PORTION THEREOF, AND MAKING THE SAME A PART OF THE PUBLIC ROAD SYSTEM OF THE TOWNSHIP OF LAWRENCE.

114

WHEREAS, a Petition has been presented by Pengard Construction, Inc., the Developer of the aforesaid portion of Meadow Road, to the Supervisors of Lawrence Township, requesting that this latest segment of Meadow Road commencing at its intersection with T-105, at a point approximately 2,050 feet from former T-823 (now L.R. 17145) and extending into and through the latest portion of the Longmeadow Development to be developed a distance of 2,200 feet to the portion of Meadow Road previously accepted into the Township Road System, be opened and made a part of the Township Road System for a distance of 2,200 feet, more or less, having a uniform width of 40 feet, and

WHEREAS, the above extended portion of Meadow Road has been paved in accordance with the specifications and has been otherwise approved by the Supervisors of the Township of Lawrence, and

WHEREAS, it is the desire of the Board of Supervisors of the Township of Lawrence to accept the said extension of Meadow Road in accordance with the Petition presented and in accordance with the dedication thereof into the Township Road System.

NOW THEREFORE, BE IT RESOLVED that Meadow Road commencing at its intersection with T-105 at a point approximately 2,050 feet from the center line of former T-823 (now L.R. 17145) and extending

into and through the latest portion of Longmeadow to be developed 2,200 feet, more or less, having a uniform width of 40 feet, be incorporated into and made a part of the Road System of Lawrence Township.

C E R T I F I C A T I O N

I, VIOLET MARGESON, Secretary of the Board of Supervisors of Lawrence Township, do hereby certify that attached hereto is a true and correct copy of the Resolution taking over an extension of Meadow Road from its intersection with T-105 at a point approximately 2,050 feet from the center line of former T-823 (now L.R. 17145) and extending into and through the latest portion of the Longmeadow Development to be developed a distance of 2,200 feet, more or less, having a uniform width of 40 feet, and making the same a part of the Township Road System, which was adopted at a regular meeting of the Supervisors of Lawrence Township held March 18, 1981, and the same has not been altered, amended or repealed and is in full force and effect as of the day of this certification.

IN WITNESS WHEREOF, I have hereunto set my hand and affixed the seal of Lawrence Township, this 18 day of March, 1981.

Violet Margeson
Secretary

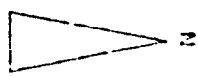
WEIGHT TRACT

PROPERTY LINE

FORMER U.S. ROUTE 322

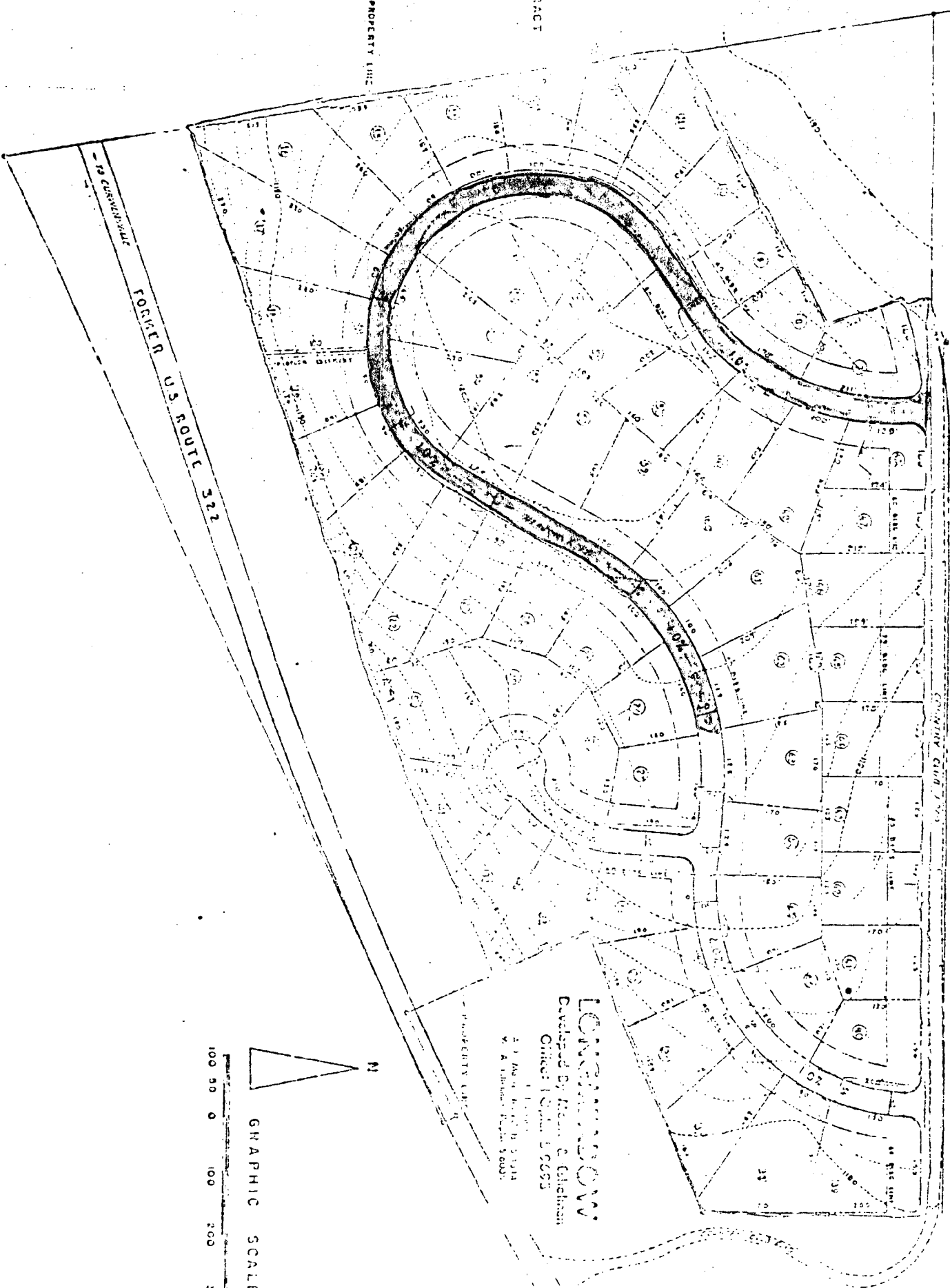
TO CUSKAWATTA

LONGMEADOW
Developed By Messrs. C. G. & S. W. G. G. G.
Office 10000 5000



100 50 0 100 200 300

GRAPHIC SCALE



81-3-Road

4/2

FILED

MAR 19 1981

15.00

RAY WITHEROW
Prothonotary
Billed

3 copies sent to
Dial Eng.
Herald Jones
Clyde, Pa