

2012-1226-CD

RE: Russell Ave., Grampian Boro

2012-1226-CD

Resolution 2012 - 01

Borough of Grampian, Clearfield County, PA

ADOPTING RESOLUTION 2012 - 01
NAMING OF BOROUGH STREET

WHEREAS, Grampian Borough, a municipality located in Clearfield County in the State of Pennsylvania; and,

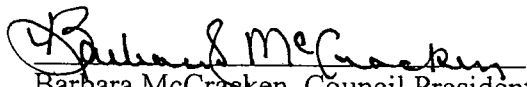
WHEREAS, the Local Government Body of Grampian Borough hereby met and unanimously voted to name said unnamed alley located within the Borough intersecting with North 6th Street found on Clearfield County Assessment Map #F-11, Map Block #344; and,

WHEREAS, that Grampian Borough Council will erect the necessary street signs with newly adopted name in compliance with the 911 Emergency Management of Clearfield County, and;

NOW THEREFORE BE IT RESOLVED, Grampian Borough Council voted that from this day July 2, 2012 and here after the unnamed street will be known as **Russell Avenue**.

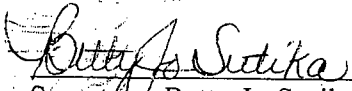
Duly adopted and approved this 2nd day of July, 2012.

BOROUGH OF GRAMPIAN

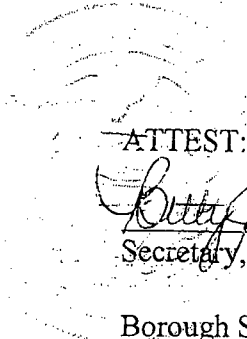

Barbara McCracken, Council President


William Waterloo, Council Vice President

ATTEST:


Secretary, Betty Jo Sutika

Borough Seal


FILED 300
9/11/13 6:11 PM
AUG 15 2012
Curry & Assoc.
William A. Shaw
Prothonotary/Clerk of Courts
pd.
\$25.00

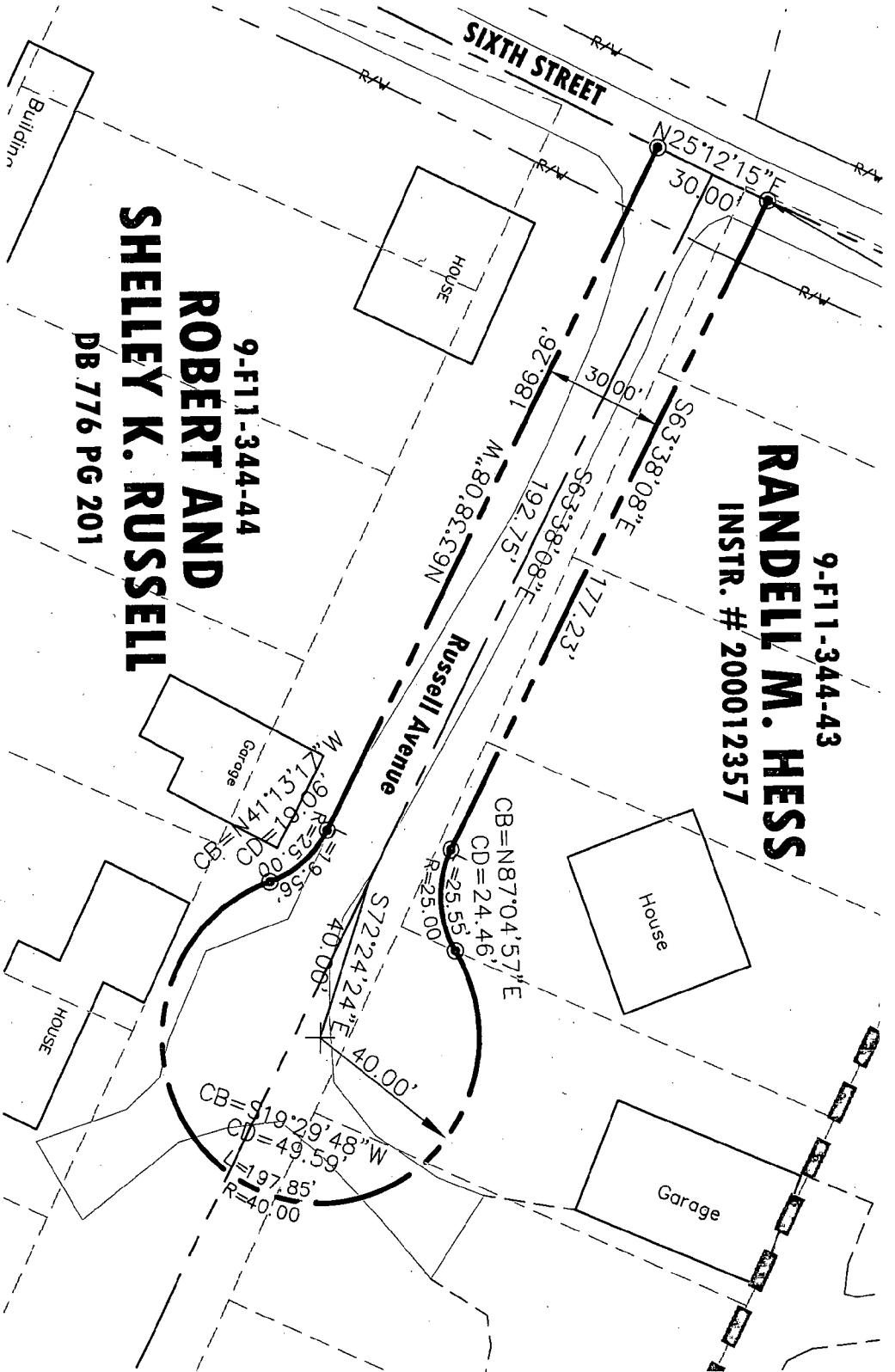
Map attached
to original
CD number

LEGEND	
---	PROPERTY LINE
---	REFERENCE LINE
---	RIGHT OF WAY LINE
---	PROPERTY LINE OF THIS SURVEY
---	CENTER LINE OF CARTWAY
---	ORIGINAL LOT LAYOUT
---	EDGE PAVES / EDGE ROADS
---	PUBLIC WATER LINES
---	E/T --- ELECTRIC / TELEPHONE LINES
---	SS --- PUBLIC SEWAGE LINE
---	DIRT ROAD
---	ASPHALT ROADS
IP3	3/4" REBAR SET
123/123	DEED REFERENCE
REBAR	REINFORCEMENT BARS
N	NORTH
S	SOUTH
E	EAST
W	WEST
°	DEGREES
'	MINUTES OR FEET
"	SECONDS
CB	CHORD BEARING
CD	CHORD DISTANCE



GRAPHIC SCALE

(IN FEET)
1 inch = 40 ft.



9-F11-344-43
RANDELL M. HESS
INSTR. # 200012357

9-F11-344-44
ROBERT AND
SHELLEY K. RUSSELL
DB 776 PG 201

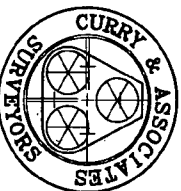
GRAMPIAN BOROUGH
GRAMPIAN, PENNSYLVANIA
FINAL MAP OF RETRACEMENT
GRAMPIAN BOROUGH
CLEARFIELD COUNTY

April 20, 2012

FIELD BOOK 112 PAGE 37

MAP NUMBERS 9-F11-340-43 & 44

FILE NUMBER 9148



Gary L. Thorp
GARY L. THORP, PLS
NO. SU-48530-E

CURRY & ASSOCIATES
207 SOUTH THIRD STREET
(814) 765-7226

CLEARFIELD, PENNSYLVANIA